

**2025 WORLDINK MEDICAL BHRT WORKSHOP SERIES
TORONTO, ON., CANADA – LIVE IN PERSON COURSES IN TORONTO**

Hotel Block Discount + Travel Details + Airports

**BHRT CME SERIES - PART I – V - Advanced BHRT Certification (ABHRT)
Mastering the Protocols for Optimization of Hormone Replacement**

PART I: Discover the Power of BHRT Fundamentals

Friday, March 14 to Sunday, March 16, 2025

Education Schedule – Live Conference – EST TIME

Friday: 8:00am – 6:00pm

Saturday: 8:00am – 6:00pm

Saturday: 6:30pm – 8:00pm – Private cocktail reception onsite for education attendee's only

Sunday: 8:00am – 12:00pm - Course is complete

Meals: Breakfast + lunch + AM + PM breaks – served onsite beside the conference room

Toronto Workshop Details + Agenda + Full Brochures

<https://www.trubalancehealthcare.com/education>

The PART I Course Includes

- E- syllabus /digital files
- Medical references/ evidence based course
- CME credits & evaluation
- Community Access – APIM Membership with Worldlink Medical – Free with PART I
- <https://worldlinkmedical.com/members-benefits/>

Optimal Audience

Medical Doctor, Nurse Practitioner, Endocrinologist, Gynecologist, Medical Doctor in Residency, Cardiologist, Radiologist, Urologist, Functional Medicine Practitioners, Registered Nurse, Registered Practical Nurse, Healthcare Coach, Naturopathic Doctor, Doctor of Osteopathic Medicine, Sports Doctor, Weight Loss Practitioner, Physician Assistant, International Medical Graduate, etc.

Education is open across borders to medically licensed practitioners

Hotel Block Rate: \$289.00CAD + tax per night

Super easy arrival, arrive into airport & take the train inside airport or walk to Terminal 3 hotel

Discount rate expires February 20th, or if the room block sells out first

Main telephone: 905.972.7000

Reservations Tel#: 1.888.627.7092

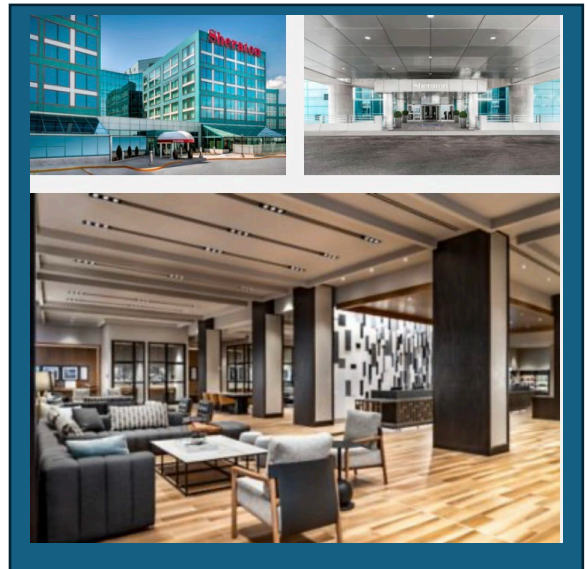
Reserve online: [Direct Hotel Link](#)

Main website: [Marriot Sheraton Hotel](#)

Parking: Level 5 rooftop, walk directly int the main hotel lobby

UPS Express Train: Direct to downtown from airport: \$12 one way - [Train link](#)

Nearest Airports: Toronto Pearson International Airport + Billy Bishop Toronto City Airport



**2025 WORLDINK MEDICAL BHRT WORKSHOP SERIES
TORONTO, ON., CANADA – LIVE IN PERSON COURSES IN TORONTO**

Hotel Block Discount + Travel Details + Airports

**BHRT CME SERIES - PART I – V - Advanced BHRT Certification (ABHRT)
Mastering the Protocols for Optimization of Hormone Replacement**

PART II: Expand Treatment Options with Advanced Concepts

Friday, June 6 to Sunday, June 8, 2025

Education Schedule – Live Conference – EST TIME

Friday: 8:00am – 6:00pm

Saturday: 8:00am – 6:00pm

Sunday: 8:00am – 12:00pm - Course is complete

Meals: Breakfast + lunch + AM + PM breaks – served onsite beside the conference room

Toronto Workshop Details + Agenda + Full Brochures

<https://www.trubalancehealthcare.com/education>

The PART II Course Includes

- E- syllabus /digital files
- Medical references/ evidence based course
- CME credits & evaluation
- Check out the APIM Membership with Worldlink Medical – Community, Clinical & Library
- <https://worldlinkmedical.com/members-benefits/>

Optimal Audience

Medical Doctor, Nurse Practitioner, Endocrinologist, Gynecologist, Medical Doctor in Residency, Cardiologist, Radiologist, Urologist, Functional Medicine Practitioners, Registered Nurse, Registered Practical Nurse, Healthcare Coach, Naturopathic Doctor, Doctor of Osteopathic Medicine, Sports Doctor, Weight Loss Practitioner, Physician Assistant, International Medical Graduate, etc.

Education is open across borders to medically licensed practitioners

Hotel Block Rate: \$289.00CAD + tax per night

Super easy arrival, arrive into airport & take the train inside airport or walk to Terminal 3 hotel

Discount rate expires May 15th, or if the room block sells out first

Main telephone: 905.972.7000

Reservations Tel#: 1.888.627.7092

Reserve online: [Direct hotel link](#)

Main website: [Marriot Sheraton Hotel](#)

Parking: Level 5 rooftop, walk directly into the main hotel lobby, discounted rate

UPS Express Train: Direct to downtown from airport: \$12 one way - [Train link](#)

Nearest Airports: Toronto Pearson International Airport + Billy Bishop Toronto City Airport

Any questions please connect with Donna | Cell: 647.884.0663 (text or call)

Email: donna@trubalancehealthcare.com

